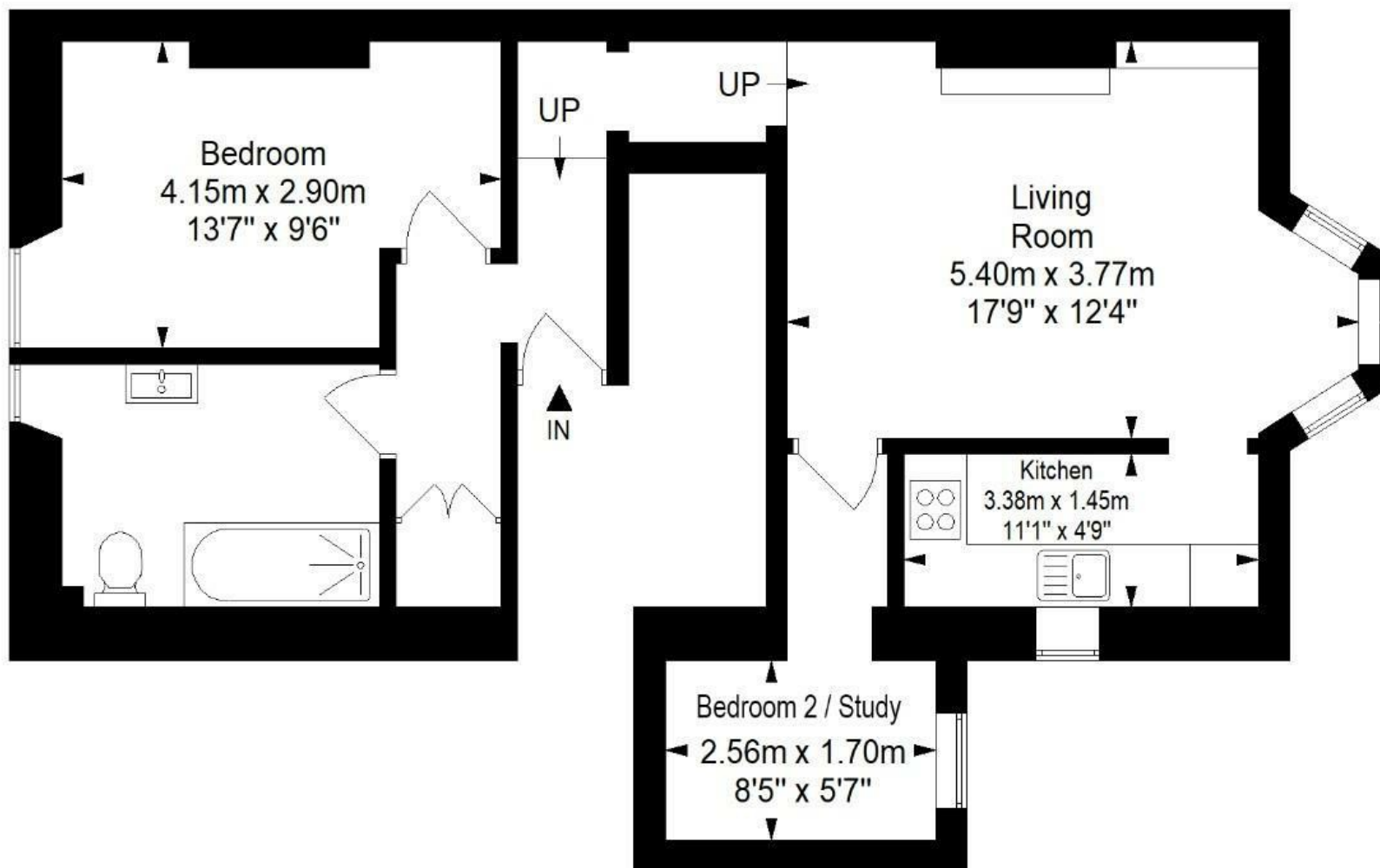




# Hall Floor Flat, Sydenham Hill, Cotham, Bristol, BS6 5SL

Approximate Gross Internal Area = 57.9 sq m/ 623.3 sq ft



**This floor plan has been drawn using RICS guidelines (GIA)**

Disclaimer : Please note this floor plan is for marketing purposes and is to be used as guide only.  
All Efforts have been made to ensure its accuracy at time of print

**Boardwalk**

# Sydenham Hill

, BRISTOL

£

£335,000



BS6 5SL

zzz

2 Bedrooms



1 Bathrooms

*"We love the light through the big bay window in the morning, relaxing in the sunny garden in the Spring and Summer. Great Restaurants, Coffee Shops and Pubs on Chandos Road and Gloucester Road, as well as a short walk into the centre and 25 min walk to Temple Meads Station, location is ideal."*

